

BACKSTAGE

VENUE SPECS

BACKSTAGE MUNICH

WERK

01 - 2024



Index

2	Sound
4	Light
5	Stage – Video – Pyro
6	Lightpatch
9	Lightplot

SOUND

PA System:

2x	4	CODA AiRRAY Top (90° / 120°)
2x	5	CODA SCP-F (18“)
2x	2	CODA SC2-F (15“)

Nearfill:

2x		CODA APS (10“ / 9“)
----	--	---------------------

Delay:

3x		CODA APS
----	--	----------

PA Amping:

6x		CODA LINUS 14D
----	--	----------------

PA Controlling:

2x		Lake LM 44
----	--	------------

FOH Desk:

Midas Heritage HD-96 - Local 8/8 In/Out
Shoutbox FoH ↔ Monitor

FOH Siderack:

1x CD-, USB-Player
1x USV

Stagerack:

Midas DL251 Stagebox (analog 48 Ch. IN / analog 16 Ch. OUT)
1x USV

Stagebox:

48 CH analog passiv 3 Way Split (2x Multipin, 1x XLR Out)

Monitor Desk:

MIDAS ProX / MIDAS M32 (Stage Right) inkl. Shoutbox FoH ↔ Monitor

A seperate monitor place with desk and technician can be booked
extra if you need it.

Just get back to our technical contact person. (technik@backstage.eu)

Multicore:

4x Cat5e
2x Cat5
2x Cat7
8x Analog Return
4x Analog Sends
2x AES/EBU

Monitor Speaker:

12x Coda Audio Cue One (2x12" / 1,4" coax) active
4x Coda Audio G15 (1x 15") - Drumfill Sub
1x Coda Audio Cue One (2x12" / 1,4" coax) active – Drumfill Top
3x Coda Audio G15 (1x15") – Sidefill Sub
2x Coda Audio RX 40 (2x12" / 2") active – Sidefill Top

Monitor Amping:

5x Linus 10 C, 4x 2500W 2 Ohm (Wedge)
1x Linus 10 C, 4x2500 W 2 Ohm (Drumfill)
4x Camco V8 2x 5000 W 2 Ohm (Sidefills)

Mics / DI:

10x Shure SM58
8x Shure SM 57
1x Shure Beta 58 A
1x Shure Beta 57 A
2x Shure Beta 52 A
2x Shure Beta 91 A
3x Sennheiser e604
5x Sennheiser e904
2x Sennheiser e906
2x Sennheiser MD421
1x Audix i5
1x Audix D6
6x Audix ADX 51
2x BSS AR133 DI active
10x Palmer DI passive
2x Shure PG48 (Talkback)

Misc:

K&M Mic-Stands
XLR Cables
German Power Cables and Distributions
2x Stepdown Transformator 110V (no Cables and Distributions)

Power:

1x 32A CEE RED (3Phase) – Production Sound (Stage Right)

Sound Limit: 99 dB(LAeq30min) DIN15905-5
– measured at FOH

LIGHT

Desk:

High End Systems Road Hog 4
High End Road Hog Playback Wing

Art-Net /sACN:

1x Elation eNode 8 pro
1x NETGEAR JGS516 16 Port

Lights Siderack:

1x USV
1x NETGEAR JGS516 16 Port

Multicore:

4x Cat7
6x DMX 5 Pin
1x DMX 3 Pin
1x DMX 3 Pin (Return)

Dimmer:

3x SmartDim 12x 2,3kW – Digital Dimmer
36 Dimmer Channels total
12 Dimmer Channels free for Production /Floor
3x 5Way DMX Splitter/Booster
2x 6 Way Schuko Break-Out Box

Backtruss:

6x Clay Paky A.Leda B-Eye K10
6x Clay Paky Axcor 400 Spot
2x Clay Paky Stormy
8x Showtex Pixel Bar 12
2x Elation Cuepix WW2

Midtruss:

4x Clay Paky Axcor 400 Spot
4x Clay Paky A.Leda B-Eye K10
1x ACL-Set Par64
3x Single Par 64 CP62

Fronttruss:

8x Robe Robin 300 Wash
4x Source 4 Zoom
4x Fresnel 2000W
2x Clay Paky Stormy
4x Elation Cuepix WW2

Sides:

8x BriteQ BT ColoRay 18FCR

Fog/Haze:

1x Look Viper – Smoke Machine
2x Look Unique – Hazer

Ambience/Disco:

24x BriteQ BT ColoRay 18FCR
36x Cameo Q-Spot 40 RGBW
10x Showtec Phantom 65

Power:

1x 125A CEE RED (3 Phase) (Stage Left)
1x 63A CEE RED (3 Phase) → Production Light (Stage Left)
2x 32A CEE RED (3Phase) (Stage Left + Right)
2x 16A CEE RED (3Phase) (Stage Left + Right)

STAGE

The earliest Load In is 13:00.
If you need to Load In earlier, the production has to take the extra costs.

Type: Layer Event Stage
Width: 10,00 m
Depth: 7,00 m
Height: 1,20 m
Clearance: 3,33 m !!!
Loading: 10,00 m (Ground Level)

Backdrop-Pipe:

Alu-Pipe 10 m
2x Steel-Hoist max. 100kg WLL

There is no way to hang lamps in our rig. No lights are being suspended from the house light!

VIDEO

Stage → FoH 1x R/G/B/H/V

PYRO

Pyro and all kinds of fire/flames are strictly forbidden!

Universe	Channel	Fixture	Place	Mode
A	1	Clay Paky A.Leda B-EYE K10	Backtruss	Shapes Mode
A	36	Clay Paky A.Leda B-EYE K10	Backtruss	Shapes Mode
A	71	Clay Paky A.Leda B-EYE K10	Backtruss	Shapes Mode
A	106	Clay Paky A.Leda B-EYE K10	Backtruss	Shapes Mode
A	141	Clay Paky A.Leda B-EYE K10	Backtruss	Shapes Mode
A	176	Clay Paky A.Leda B-EYE K10	Backtruss	Shapes Mode
A	211	Clay Paky A.Leda B-EYE K10	Midtruss	Shapes Mode
A	246	Clay Paky A.Leda B-EYE K10	Midtruss	Shapes Mode
A	281	Clay Paky A.Leda B-EYE K10	Midtruss	Shapes Mode
A	316	Clay Paky A.Leda B-EYE K10	Midtruss	Shapes Mode
A	351	Clay Paky Stormy	Midtruss	3 ch
A	354	Clay Paky Stormy	Midtruss	3 ch
A	357	Clay Paky Stormy	Fronttruss	3 ch
A	360	Clay Paky Stormy	Fronttruss	3 ch
A	363	BriteQ BT-ColoRay 18FCR	SR Side	R+G+B+W+ Master Dim + Strobe (6ch.)
A	369	BriteQ BT-ColoRay 18FCR	SR Side	R+G+B+W+ Master Dim + Strobe (6ch.)
A	375	BriteQ BT-ColoRay 18FCR	SR Side	R+G+B+W+ Master Dim + Strobe (6ch.)
A	381	BriteQ BT-ColoRay 18FCR	SR Side	R+G+B+W+ Master Dim + Strobe (6ch.)
A	387	BriteQ BT-ColoRay 18FCR	SL Side	R+G+B+W+ Master Dim + Strobe (6ch.)
A	393	BriteQ BT-ColoRay 18FCR	SL Side	R+G+B+W+ Master Dim + Strobe (6ch.)
A	399	BriteQ BT-ColoRay 18FCR	SL Side	R+G+B+W+ Master Dim + Strobe (6ch.)
A	405	BriteQ BT-ColoRay 18FCR	SL Side	R+G+B+W+ Master Dim + Strobe (6ch.)
A	437	Fresnel 2kW	Fronttruss	Single Dimmer CH.
A	438	Fresnel 2kW	Fronttruss	Single Dimmer CH.
A	439	Fresnel 2kW	Fronttruss	Single Dimmer CH.
A	440	Fresnel 2kW	Fronttruss	Single Dimmer CH.
A	431	ETC Source Four Zoom	Fronttruss	Single Dimmer CH.
A	432	ETC Source Four Zoom	Fronttruss	Single Dimmer CH.
A	433	ETC Source Four Zoom	Fronttruss	Single Dimmer CH.
A	434	ETC Source Four Zoom	Fronttruss	Single Dimmer CH.
A	443	Single Par 64	Fronttruss	Single Dimmer CH.
A	444	Single Par 64	Fronttruss	Single Dimmer CH.
A	445	Single Par 64	Fronttruss	Single Dimmer CH.
A	411	Elation Cuepix WW2	Backtruss	Single Dimmer CH.
A	412	Elation Cuepix WW2	Backtruss	Single Dimmer CH.
A	413	Elation Cuepix WW2	Fronttruss	Single Dimmer CH.
A	414	Elation Cuepix WW2	Fronttruss	Single Dimmer CH.
A	415	Elation Cuepix WW2	Fronttruss	Single Dimmer CH.
A	416	Elation Cuepix WW2	Fronttruss	Single Dimmer CH.
A	446	ACL Set	Backtruss	Single Dimmer CH.

Universe	Channel	Fixture	Place	Mode
B	1	Robe Robin 300 LED Wash	Fronttruss	Mode 2 (21ch.)
B	22	Robe Robin 300 LED Wash	Fronttruss	Mode 2 (21ch.)
B	43	Robe Robin 300 LED Wash	Fronttruss	Mode 2 (21ch.)
B	64	Robe Robin 300 LED Wash	Fronttruss	Mode 2 (21ch.)
B	85	Robe Robin 300 LED Wash	Fronttruss	Mode 2 (21ch.)
B	106	Robe Robin 300 LED Wash	Fronttruss	Mode 2 (21ch.)
B	127	Robe Robin 300 LED Wash	Fronttruss	Mode 2 (21ch.)
B	148	Robe Robin 300 LED Wash	Fronttruss	Mode 2 (21ch.)
B	169	Showtec Pixel Bar 12	Backtruss	Mode 4 (7ch.)
B	176	Showtec Pixel Bar 12	Backtruss	Mode 4 (7ch.)
B	183	Showtec Pixel Bar 12	Backtruss	Mode 4 (7ch.)
B	190	Showtec Pixel Bar 12	Backtruss	Mode 4 (7ch.)
B	197	Showtec Pixel Bar 12	Backtruss	Mode 4 (7ch.)
B	204	Showtec Pixel Bar 12	Backtruss	Mode 4 (7ch.)
B	211	Showtec Pixel Bar 12	Backtruss	Mode 4 (7ch.)
B	218	Showtec Pixel Bar 12	Backtruss	Mode 4 (7ch.)
B	225	Clay Paky Axcor Spot 400	Backtruss	Standard Mode 28ch.
B	253	Clay Paky Axcor Spot 400	Backtruss	Standard Mode 28ch.
B	281	Clay Paky Axcor Spot 400	Backtruss	Standard Mode 28ch.
B	309	Clay Paky Axcor Spot 400	Backtruss	Standard Mode 28ch.
B	337	Clay Paky Axcor Spot 400	Backtruss	Standard Mode 28ch.
B	365	Clay Paky Axcor Spot 400	Backtruss	Standard Mode 28ch.
B	393	Clay Paky Axcor Spot 400	Midtruss	Standard Mode 28ch.
B	421	Clay Paky Axcor Spot 400	Midtruss	Standard Mode 28ch.
B	449	Clay Paky Axcor Spot 400	Midtruss	Standard Mode 28ch.
B	477	Clay Paky Axcor Spot 400	Midtruss	Standard Mode 28ch.
B	511	Unique Hazer	SL + SR	2ch.

Universe	Channel	Fixture	Place	Mode
C	133	BriteQ BT-ColoRay 18FCR	Pool SR	R+G+B+W+ Master Dim + Strobe (6ch.)
C	139	BriteQ BT-ColoRay 18FCR	Pool SR	R+G+B+W+ Master Dim + Strobe (6ch.)
C	145	BriteQ BT-ColoRay 18FCR	Pool SR	R+G+B+W+ Master Dim + Strobe (6ch.)
C	151	BriteQ BT-ColoRay 18FCR	Pool SR	R+G+B+W+ Master Dim + Strobe (6ch.)
C	157	BriteQ BT-ColoRay 18FCR	Pool SR	R+G+B+W+ Master Dim + Strobe (6ch.)
C	163	BriteQ BT-ColoRay 18FCR	Pool SR	R+G+B+W+ Master Dim + Strobe (6ch.)
C	169	BriteQ BT-ColoRay 18FCR	Pool FOH	R+G+B+W+ Master Dim + Strobe (6ch.)
C	175	BriteQ BT-ColoRay 18FCR	Pool FOH	R+G+B+W+ Master Dim + Strobe (6ch.)
C	181	BriteQ BT-ColoRay 18FCR	Pool FOH	R+G+B+W+ Master Dim + Strobe (6ch.)
C	187	BriteQ BT-ColoRay 18FCR	Pool FOH	R+G+B+W+ Master Dim + Strobe (6ch.)
C	193	BriteQ BT-ColoRay 18FCR	Pool SL	R+G+B+W+ Master Dim + Strobe (6ch.)
C	199	BriteQ BT-ColoRay 18FCR	Pool SL	R+G+B+W+ Master Dim + Strobe (6ch.)
C	205	BriteQ BT-ColoRay 18FCR	Pool SL	R+G+B+W+ Master Dim + Strobe (6ch.)
C	211	BriteQ BT-ColoRay 18FCR	Pool SL	R+G+B+W+ Master Dim + Strobe (6ch.)
C	217	BriteQ BT-ColoRay 18FCR	Pool SL	R+G+B+W+ Master Dim + Strobe (6ch.)
C	223	BriteQ BT-ColoRay 18FCR	Pool SL	R+G+B+W+ Master Dim + Strobe (6ch.)
C	229	Cameo Q-Spot 40 RGBW	Säule	9 CH. Mode
C	238	Cameo Q-Spot 40 RGBW	Säule	9 CH. Mode
C	247	Cameo Q-Spot 40 RGBW	Säule	9 CH. Mode
C	256	Cameo Q-Spot 40 RGBW	Säule	9 CH. Mode
C	265	Cameo Q-Spot 40 RGBW	Säule	9 CH. Mode
C	274	Cameo Q-Spot 40 RGBW	Säule	9 CH. Mode
C	283	Cameo Q-Spot 40 RGBW	Säule	9 CH. Mode
C	292	Cameo Q-Spot 40 RGBW	Säule	9 CH. Mode
C	301	Cameo Q-Spot 40 RGBW	Säule	9 CH. Mode
C	310	Cameo Q-Spot 40 RGBW	Säule	9 CH. Mode
C	319	Cameo Q-Spot 40 RGBW	Säule	9 CH. Mode
C	328	Cameo Q-Spot 40 RGBW	Säule	9 CH. Mode
C	337	Cameo Q-Spot 40 RGBW	Säule	9 CH. Mode
C	346	Cameo Q-Spot 40 RGBW	Säule	9 CH. Mode
C	355	Cameo Q-Spot 40 RGBW	Säule	9 CH. Mode
C	364	Cameo Q-Spot 40 RGBW	Säule	9 CH. Mode
C	373	Cameo Q-Spot 40 RGBW	Säule	9 CH. Mode
C	382	Cameo Q-Spot 40 RGBW	Säule	9 CH. Mode
C	391	Cameo Q-Spot 40 RGBW	Säule	9 CH. Mode
C	400	Cameo Q-Spot 40 RGBW	Säule	9 CH. Mode
C	409	Cameo Q-Spot 40 RGBW	Säule	9 CH. Mode
C	418	Cameo Q-Spot 40 RGBW	Säule	9 CH. Mode
C	427	Cameo Q-Spot 40 RGBW	Säule	9 CH. Mode
C	436	Cameo Q-Spot 40 RGBW	Säule	9 CH. Mode

Universe	Channel	Fixture	Place	Mode
D	1	Showtec Phantom 65	Disco	Hog Mode (22ch.)
D	23	Showtec Phantom 65	Disco	Hog Mode (22ch.)
D	45	Showtec Phantom 65	Disco	Hog Mode (22ch.)
D	67	Showtec Phantom 65	Disco	Hog Mode (22ch.)
D	89	Showtec Phantom 65	Disco	Hog Mode (22ch.)
D	111	Showtec Phantom 65	Disco	Hog Mode (22ch.)
D	133	Showtec Phantom 65	Disco	Hog Mode (22ch.)
D	155	Showtec Phantom 65	Disco	Hog Mode (22ch.)
D	177	Showtec Phantom 65	Disco	Hog Mode (22ch.)
D	199	Showtec Phantom 65	Disco	Hog Mode (22ch.)
D	265	GLP Volkslicht Zoom	Disco	15ch
D	280	GLP Volkslicht Zoom	Disco	15ch
D	295	GLP Volkslicht Zoom	Disco	15ch
D	310	GLP Volkslicht Zoom	Disco	15ch
D	325	GLP Volkslicht Zoom	Disco	15ch
D	340	GLP Volkslicht Zoom	Disco	15ch
D	379	BriteQ BT-ColoRay 18FCR	Merch-Podest	R+G+B+W+ Master Dim + Strobe (6ch.)
D	385	BriteQ BT-ColoRay 18FCR	Merch-Podest	R+G+B+W+ Master Dim + Strobe (6ch.)
D	391	BriteQ BT-ColoRay 18FCR	Merch-Podest	R+G+B+W+ Master Dim + Strobe (6ch.)
D	397	BriteQ BT-ColoRay 18FCR	Merch-Podest	R+G+B+W+ Master Dim + Strobe (6ch.)
D	403	BriteQ BT-ColoRay 18FCR	Merch-Podest	R+G+B+W+ Master Dim + Strobe (6ch.)
D	409	BriteQ BT-ColoRay 18FCR	Merch-Podest	R+G+B+W+ Master Dim + Strobe (6ch.)
D	415	BriteQ BT-ColoRay 18FCR	Merch-Podest	R+G+B+W+ Master Dim + Strobe (6ch.)
D	421	BriteQ BT-ColoRay 18FCR	Merch-Podest	R+G+B+W+ Master Dim + Strobe (6ch.)
D	427	BriteQ BT-ColoRay 18FCR	Merch-Podest	R+G+B+W+ Master Dim + Strobe (6ch.)
D	433	BriteQ BT-ColoRay 18FCR	Merch-Podest	R+G+B+W+ Master Dim + Strobe (6ch.)

Universe	Channel	Fixture	Place	Mode
E	1	Cameo Q-Spot 40 RGBW	Merch-Area	9 CH. Mode
E	10	Cameo Q-Spot 40 RGBW	Merch-Area	9 CH. Mode
E	19	Cameo Q-Spot 40 RGBW	Merch-Area	9 CH. Mode
E	28	Cameo Q-Spot 40 RGBW	Merch-Area	9 CH. Mode
E	37	Cameo Q-Spot 40 RGBW	Merch-Area	9 CH. Mode
E	46	Cameo Q-Spot 40 RGBW	Merch-Area	9 CH. Mode
E	55	Cameo Q-Spot 40 RGBW	Merch-Area	9 CH. Mode
E	64	Cameo Q-Spot 40 RGBW	Merch-Area	9 CH. Mode
E	73	Cameo Q-Spot 40 RGBW	Merch-Area	9 CH. Mode
E	82	Cameo Q-Spot 40 RGBW	Merch-Area	9 CH. Mode
E	91	Cameo Q-Spot 40 RGBW	Merch-Area	9 CH. Mode
E	100	Cameo Q-Spot 40 RGBW	Merch-Area	9 CH. Mode
E	109	Briteq BT-COLORAY 18FCR	Merch-Area	R+G+B+W+ Master Dim + Strobe (6ch.)
E	115	Briteq BT-COLORAY 18FCR	Merch-Area	R+G+B+W+ Master Dim + Strobe (6ch.)
E	121	Briteq BT-COLORAY 18FCR	Merch-Area	R+G+B+W+ Master Dim + Strobe (6ch.)
E	127	Briteq BT-COLORAY 18FCR	Merch-Area	R+G+B+W+ Master Dim + Strobe (6ch.)
E	133	Briteq BT-COLORAY 18FCR	Merch-Area	R+G+B+W+ Master Dim + Strobe (6ch.)
E	139	Briteq BT-COLORAY 18FCR	Merch-Area	R+G+B+W+ Master Dim + Strobe (6ch.)
E	145	Briteq BT-COLORAY 18FCR	Merch-Area	R+G+B+W+ Master Dim + Strobe (6ch.)
E	151	Briteq BT-COLORAY 18FCR	Merch-Area	R+G+B+W+ Master Dim + Strobe (6ch.)
E		Briteq BT-COLORAY 18FCR	Merch-Area	R+G+B+W+ Master Dim + Strobe (6ch.)

F	Guest Universe 5-pin	FOH to Stage
G	Guest Universe 5-pin	FOH to Stage

Art-Net / sACN SETUP:

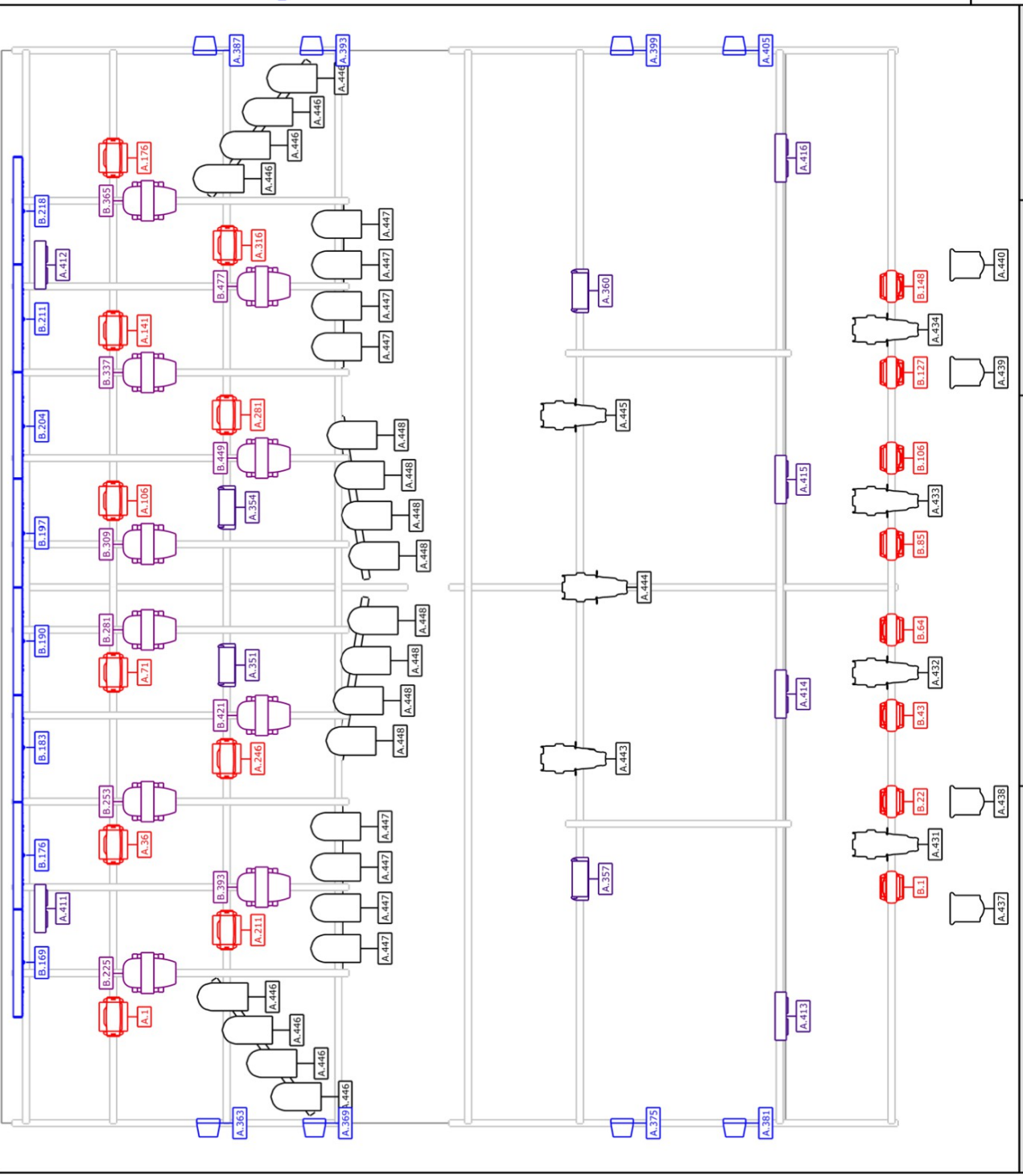
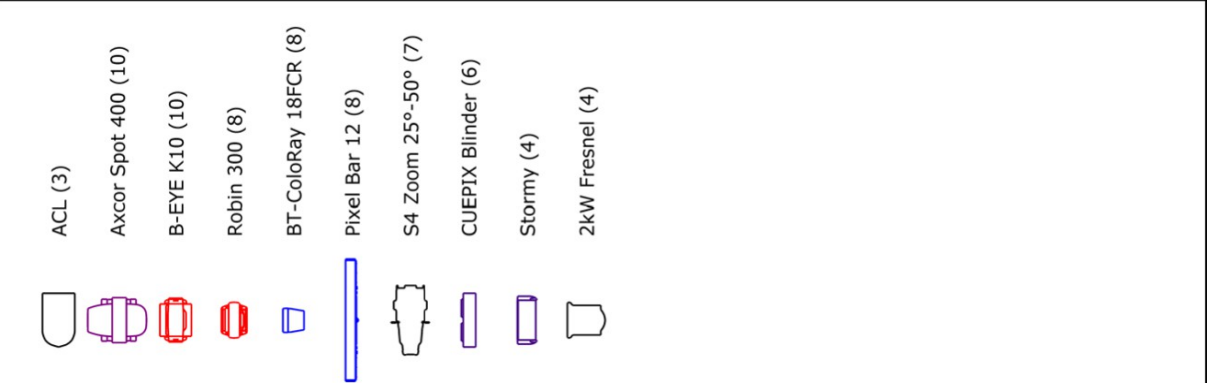
House Console IP: 10.0.0.1

Node IP: 10.0.0.2

Production IP: 10.0.0.10 – 10.0.0.20

Network Mask: 255.255.255.0

If you don't want to use our sACN Setup – NO WORRIES – we will find a way!



Project	Backstage München	Project location	Werk	Stage Plot	Project date	04/2022
---------	-------------------	------------------	------	------------	--------------	---------

